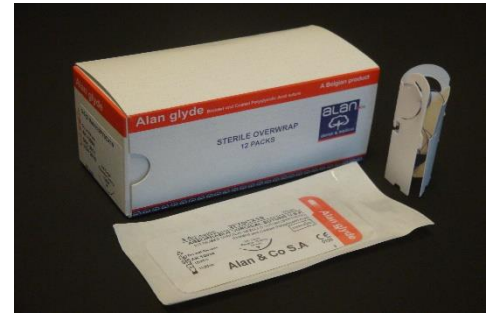


TECHNICAL DATA SHEET



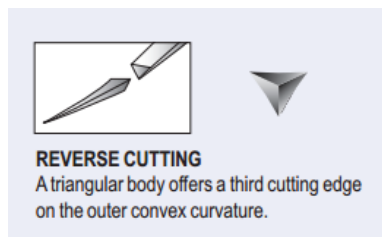
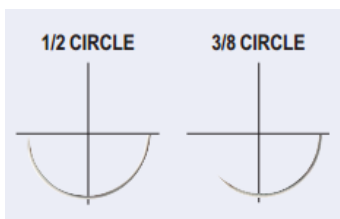
Alan-Glyde suture



| | |
|---------------------|---|
| MATERIAL | <ul style="list-style-type: none"> Braided and coated polyglycolic acid Violet coloured with D & C Violet No.2 Coated with unique combination of polycaprolactone and calcium stearate Needle made of stainless steel, silicone coated |
| PRODUCT INFORMATION | <ul style="list-style-type: none"> Sterile, synthetic surgical suture Absorbable Multifilament Loss of tensile strength: 75% at 2 weeks, 50% at 3 weeks, 90% loss of tensile strength after 4 weeks Complete absorption after 10 weeks (70 days) Needle eases the passage without damaging the tissue Shelf life: 5years from production date Class III medical device sterile, single use product General tolerance: +/- 10 % |
| PACKAGING | <ul style="list-style-type: none"> 12 sterile pouch/box which protects from the dust Alan brand only Box dimensions: 62x130x62 mm Export box dimensions: 60x40x60 cm, 216 boxes/export box Should be stored in a clean and dry place, out of direct sunlight and below a temperature of 30°C |

STANDARDS PACKAGING

| Reference | Needle profile | Needle description | Needle length | Size | Thread length |
|-----------|----------------|--------------------|---------------|------|---------------|
| SUTPG3 | 3/8 | Reverse cutting | 19 mm | 3/0 | 70 cm |
| SUTPG4 | 3/8 | Reverse cutting | 19 mm | 4/0 | 70 cm |



Ouverture facile

- 1 Déchirer la feuille à l'entaille dans le sens indiqué
- 2 Abaisser la partie déchirée jusqu'à ce que l'aiguille soit visible
- 3 Utiliser le porte aiguille et retirer la suture

ALAN & CO

Avenue André Ernst 17 – 4800 Verviers – Belgium
Tel : +32 87 31 10 59 – Fax : +32 87 31 61 69

We are ISO 13485 certified and our products are CE marked

Version 2021/09